



Smarter Returns Start Here




Reduce return friction, keep revenue in-house, and power post-purchase success with fully integrated return automation.

Start a return 24/7

Start

Returning a gift card?

Start here



Meet merchants who use Loop



How It works

Returns that flow all the way through fulfillment.

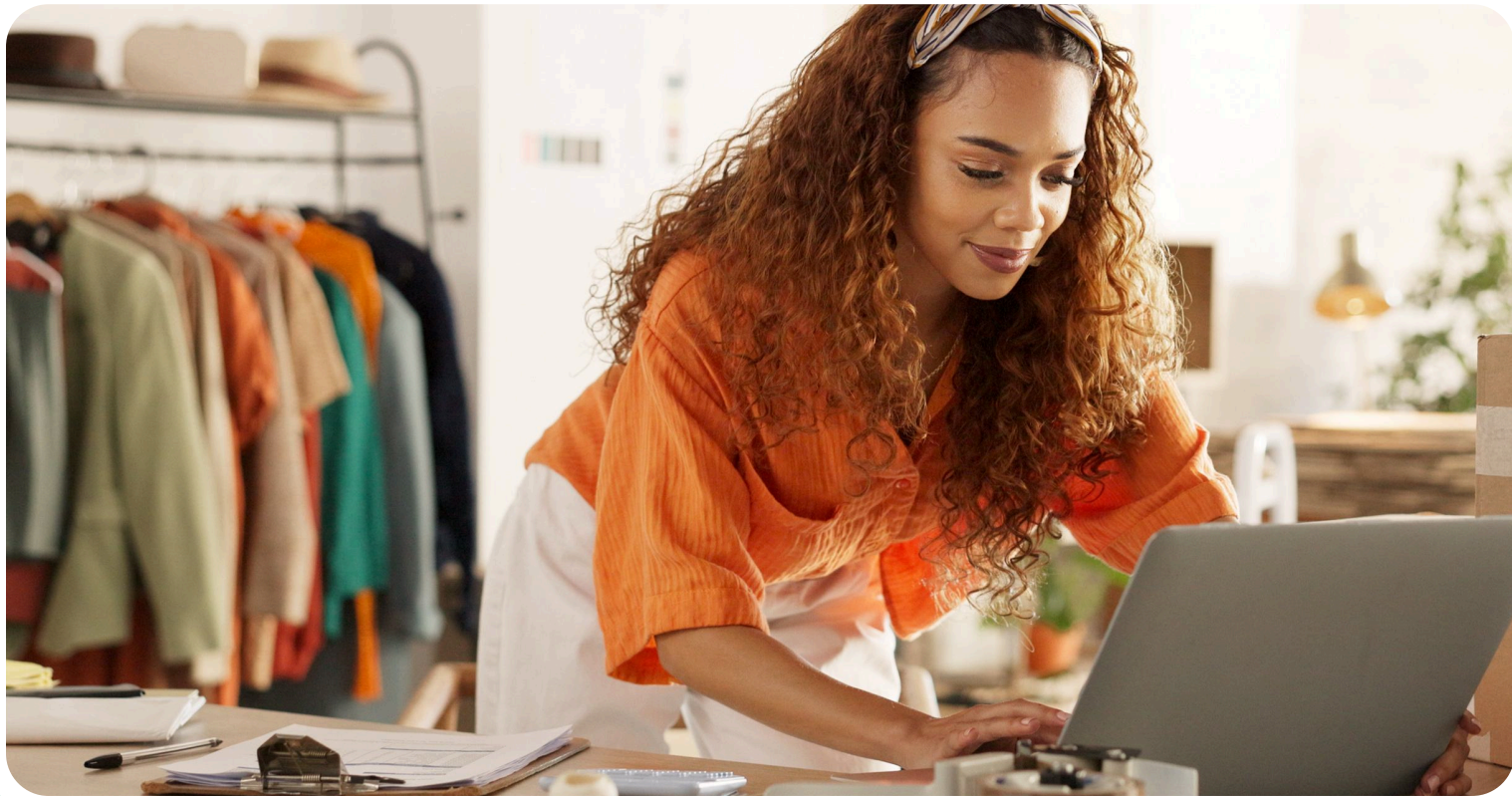
- ✓ Loop automatically creates RMAs in ShipMonk as soon as a return is approved. No manual entry needed.
- ✓ ShipMonk receives and processes Loop-provided return labels or generates its own as needed.
- ✓ Exchanges and returns move through ShipMonk's system with up-to-date SKU, location, and stock info.
- ✓ Returned items follow merchant-defined logic: restock, quarantine, dispose, rework, or custom flow.

Returns are fully embedded in your fulfillment workflow. No toggling between systems, no guesswork for warehouse teams.



Why merchants love this integration

- ⚙ Quick and easy activation via the ShipMonk App Store or your CSM.
- ➡ Simple integration with Shopify and Shopify Plus.
- 🕒 Eliminate time spent manually issuing RMAs or tracking return status across systems.
- 🤝 Speed up customer resolution and protect long-term loyalty.
- 🖥 Works out-of-the-box for all brands.





Loop + ShipMonk

ShipMonk and Loop have worked closely to build and refine this integration together, prioritizing:

- ✓ Warehouse-native return flows that keep your ops team in sync.
- ✓ Custom configuration support to handle complex logic.
- ✓ Ongoing collaboration on feature improvements and onboarding.
- ✓ Mutual merchant success as the foundation of our partnership.

When your return platform and fulfillment partner are in sync, your customers stay happy, and your team stays efficient.

By the numbers



57%
of Loop returns end in an exchange



80%
of Loop merchants retain revenue post-return



\$1.30
in average upsell per return

Millions

of packages shipped annually

3M



total square feet
in our network

7-days



a week we fulfill orders to get your products
delivered faster and meet customer demand

**Inc.
5000**

8 straight years ranked
in Top US Company

One connected system

Eliminate the hassle. Seamlessly link every sales
channel and tool to simplify operations.



100+ integrations

Ready to get started?



info@shipmonk.com



(855) 222-4601



shipmonk.com

Get a Quote

Ship smarter, scale bigger, and grow confidently with ShipMonk!